

PEOPLE TARGETED

9.8 M

PEOPLE REACHED

3.8 M *

WOREDAS TARGETED

794**

WOREDAS REACHED

387

USD REQUIRED

303.5 M

USD RECEIVED

69.9M**
(23%)

* Excludes people receiving health messages

** Corrected from previous bulletins as per
<https://fts.unocha.org/plans/1128/summary>

50 HEALTH CLUSTER PARTNERS

880 k MEDICAL KITS DELIVERED

1.4 M USD SPENT ON MEDICAL KITS

4 OUTBREAKS (Cholera, Measles,
Malaria, and Dengue)

Highlights

- **1.3 million people affected by floods**, majority from Somali (68%), Oromia (21%), South (6%), Gambella (4%), and Afar (1%). So far, 54 people have died and over 600,000 have been displaced.
- **Further spread of cholera due to floods**: 12% increase in number of cholera deaths during November when compared to the preceding month, with 28,333 cholera cases reported as of 29 November 2023, including 404 deaths and an increasing Case Fatality Rate (number of cholera deaths among cholera cases) of 1.43%, when compared to 1.37% on 1 November 2023.
- Health partners are resuming operations in **Amhara**, with a number of new partners stepping in to support the increasing public health needs. National epidemiological data on malaria and measles are again including data from **Amhara**.
- Number of weekly malaria cases reported nationwide **exceeding 100,000**, totalling 3.2 million malaria cases up to 26 November 2023.
- Steady increase in measles cases due to consistent low immunization coverage. Expanding measles outbreak in Southwest region with 8,290 cases reported as of 26 November 2023, including 30 deaths.



Save the Children delivering basic medical supplies to flood affected communities in Dawa Zone, Somali

Health cluster action

Flooding

Many health centres and health posts have been damaged or destroyed by the floods, leaving the population without access to basic health services.

Partners are mobilizing Mobile Health and Nutrition teams to provide basic health services to populations displaced by floods. Partners are also supporting with delivery of supplies to difficult-to-reach areas.

In response to the floods, CUAMM is running a Mobile Health and Nutrition team for 80,000 displaced people in Dasenech woreda of South Omo Zone in former SNNP Region. These are the only health care services the population has access to. The floods also damaged 2 health centres and 12 health posts.



Conflict in Amhara

Internet remains cut off in the entire region, severely impeding communication with health partners and authorities. The situation remains dire in the region, with many areas affected by ongoing insecurity. Thanks to OCHA's Central Emergency Relief Fund (CERF), WHO is supporting Medical Team International (MTI) with provision of health services in Kumer refugee camp, in close collaboration with UNHCR.

Measles

The current measles outbreak started on 12 August 2021, with a total of 341 woredas affected across the country since then. As of 26 November 2023, **59 woredas are reporting active measles outbreaks**. The majority of measles cases are reported from Southwest (33%), Oromia (20%), Amhara (18%), and Somali (11%) regions.

39% of measles cases had not received any measles vaccination.

Variation in cumulative **measles** cases as of 26 November 2023

	28-Aug	25-Sep	29-Oct	26-Nov
Cases	13,448	16,713	20,782	25,104
% ↑	16%	24%	24%	21%
Deaths	122	127	159	195
% ↑	13%	4%	25%	23%
CFR	0.91%	0.76%	0.77%	0.78%

Cholera

Increase in the number of woredas with active cholera outbreaks from 81 on 1 November to 97 on 29 November 2023, the majority in Amhara (27%), followed by Oromia (25%), Somali (11%), Afar (9%), Dire Dawa (8%), Harari (8%), Tigray (5%), Southeast or SER (4%), Sidama (2%), and Central East or CER (1%).

The cholera outbreak has been controlled in 198 woredas out of the total 295 woredas that reported cholera cases since the start of the outbreak in August 2022.

Over **8.3 million people have so far been vaccinated** with one dose of Oral Cholera Vaccine (OCV) in 72 woredas of Somali, CER, SER, Sidama, Oromia, Amhara, and Afar regions. Campaign will start on 28 November 2023 in Oromia.

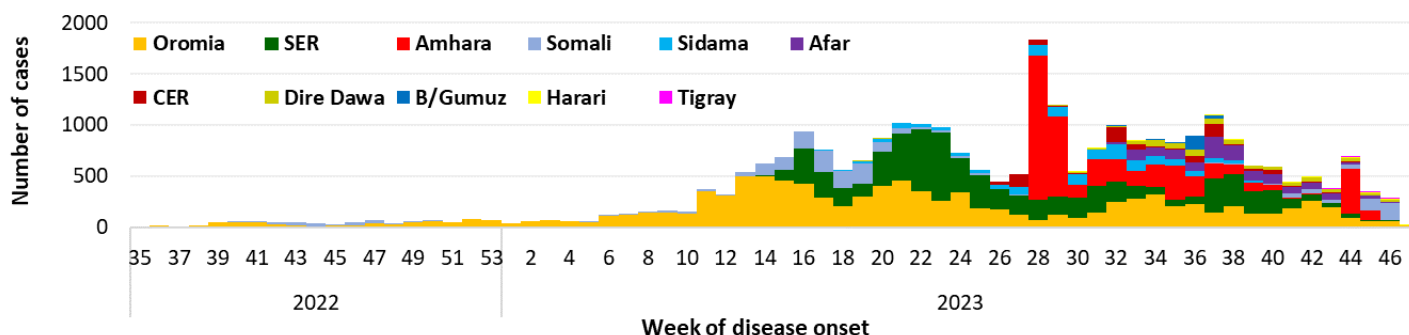
As of 29 November 2023, **32 cholera patients are admitted** among the total of 188 Cholera Treatment Centres (CTC) and 108 Cholera Treatment Units (CTUs) that have been set up throughout the country.

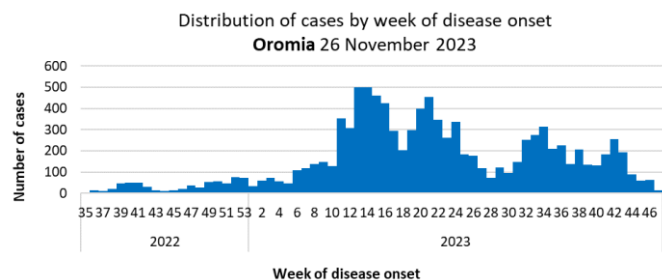
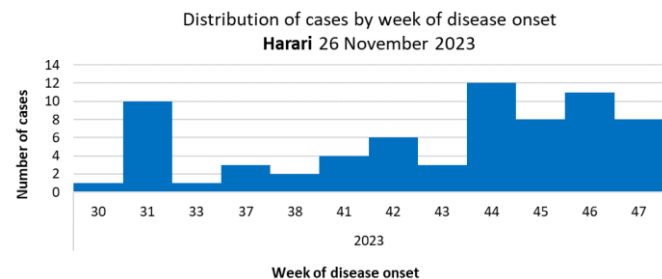
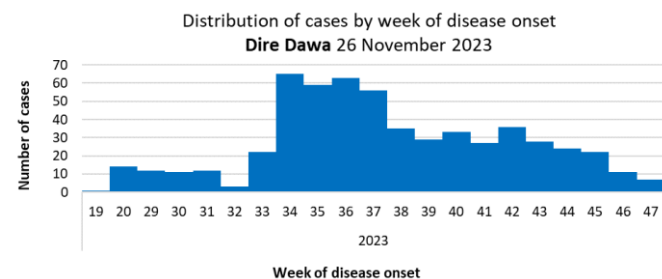
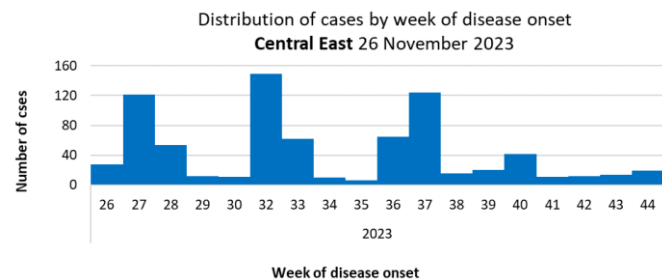
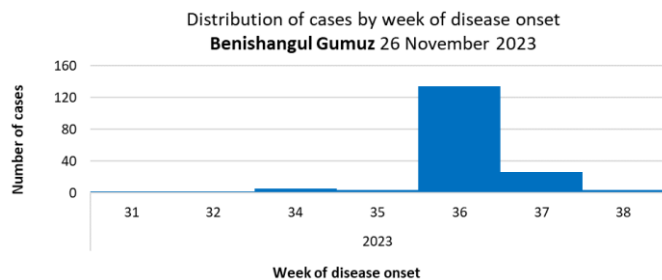
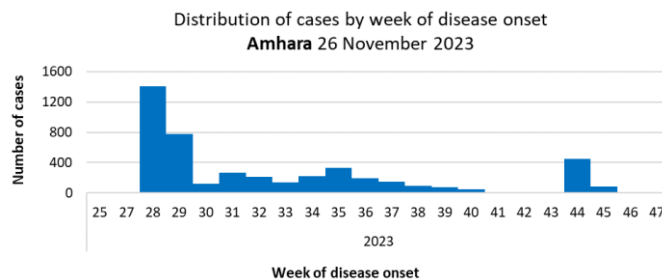
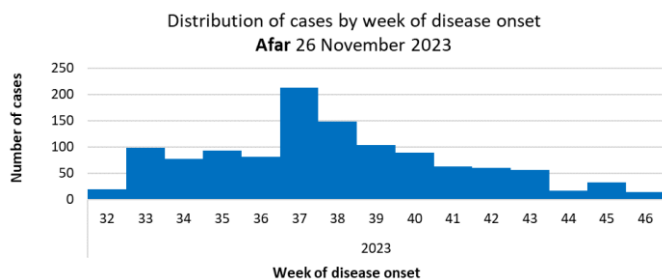
Health partners are continuing to support with running CTCs, health and hygiene promotion, distribution of supplies, training of health workers and awareness raising among at-risk communities. Thanks to OCHA's CERF, WHO is supporting 5 health partners with funding for cholera response: GOAL in Amhara, IMC in Oromia, IOM in Sidama and Somali, MTI in Afar, and MCMDO in multiple regions. The European Union has made an additional €1 million available for health partners to support the cholera outbreak

Variation in cumulative number **cholera** cases and deaths since 27 August 2022 up to 29 November 2023

	31-Aug	27-Sep	1-Nov	29-Nov
Cases	20,201	24,929	26,398	<u>28,333</u>
% ↑	24%	23%	6%	7%
Deaths	271	327	362	404
% ↑	28%	21%	11%	12%
CFR	1.34%	1.31%	1.37%	1.43%

Distribution of **cholera** cases by week of disease onset and region as of 26 November 2023





Malaria

As of 26 November 2023, **979 woredas are reporting at least one confirmed malaria case**, the majority in Oromia (32%), followed by Amhara (22%), and Southwest (11%).

Nationwide, over 100,000 malaria cases are now reported in one week.

Gambella region consistently has the highest incidence rate (*number of cases per 100,000 population*).

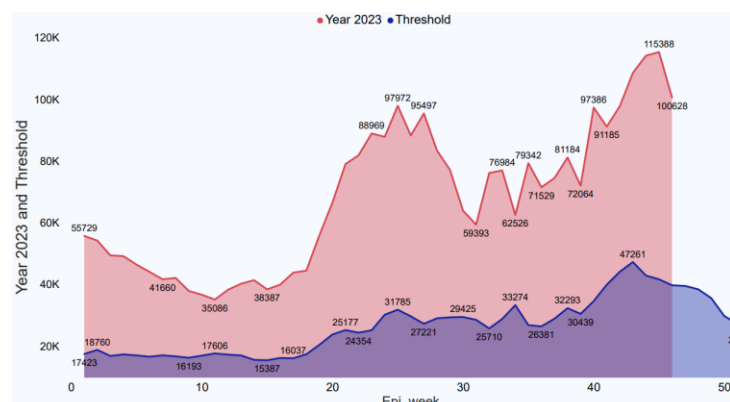
Health partners like **Action Against Hunger, International Orthodox Christian Charities, the Oromia Physicians Association, Project HOPE, Self Help Africa, GOAL, and World Vision** are supporting with last-mile delivery of malaria supplies in difficult-to-reach areas like East and West Wellega in Western Oromia as well as North and South Wollo in Amhara.

Concerned donors like the **President's Malaria Initiative (PMI)** are stepping in to support health partners and the Ministry of Health with ensuring health facilities have sufficient supplies available.

Variation in cumulative **malaria** cases as of 26 November 2023

	28-Aug	25-Sep	29-Oct	26-Nov
Cases	2,038,973	2,304,227	2,873,114	3,241,862
% ↑	22%	13%	25%	13%

Malaria case trend for 2023 compared to emergency threshold



OPA (Oromia Physicians Association) supported with last mile delivery of malaria supplies and provision of health care services in West Wellega (Western Oromia)

Challenges

- **Ongoing insecurity** in Amhara, Benishangul Gumuz, Western Oromia, and Tigray is negatively affecting the delivery of basic health services including immunization, distribution of bednets, surveillance and transport of samples for laboratory confirmation, resulting in increased risk of undetected disease outbreaks.
- **Lack of continuous funding is forcing health partners to interrupt their activities, particularly running of MHNT in remote areas.**
- **El Niño causing drought and floods** in different parts of Ethiopia is expected to further aggravate severe malnutrition resulting in an increase in mortality and morbidity.

Next steps

- Formalizing appointment of health cluster co-coordinators for Gambella and Benishangul Gumuz, thanks to the generous support of ACF and MCMDO.
- Focus on **durable solutions for safe drinking water supply systems and combating open defecation** to prevent cholera, increased **immunization coverage** and strengthening of sexual reproductive health to combat high maternal and neonatal mortality
- Advocating for **Mobile Health and Nutrition Teams (MHNT) as a routine health intervention** (NOT just for emergencies), particularly for Afar and Somali
- Finalizing the **2024 Humanitarian Response Plan**



